

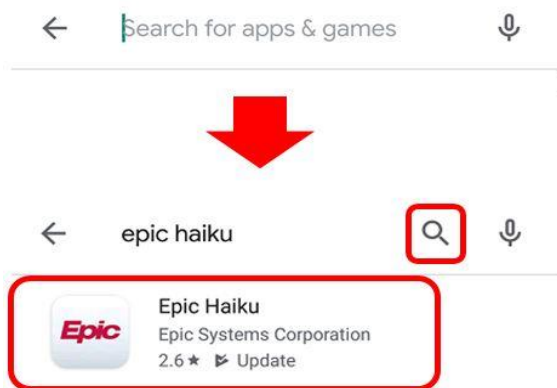


## Set up Haiku on your Android Smartphone for Epic Access

1. Open the Google Play Store



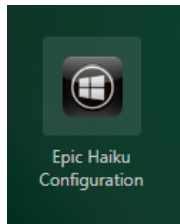
2. Type "Epic Haiku" in the search window located at the top of your screen, tap the magnifying glass icon and select Epic Haiku



3. Install Epic Haiku app



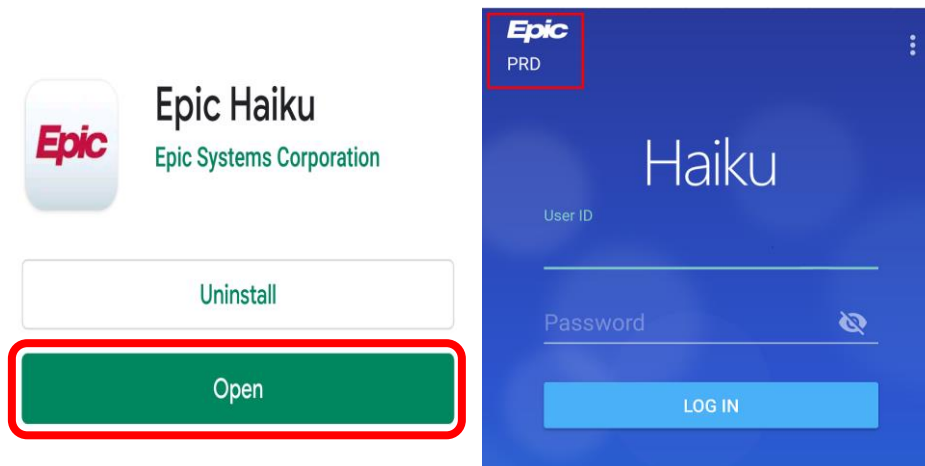
4. From your web browser, log into Citrix.uhnj.org using your core credentials
  - Find and click the Epic Haiku Configuration Icon then click 'Import Haiku Configuration



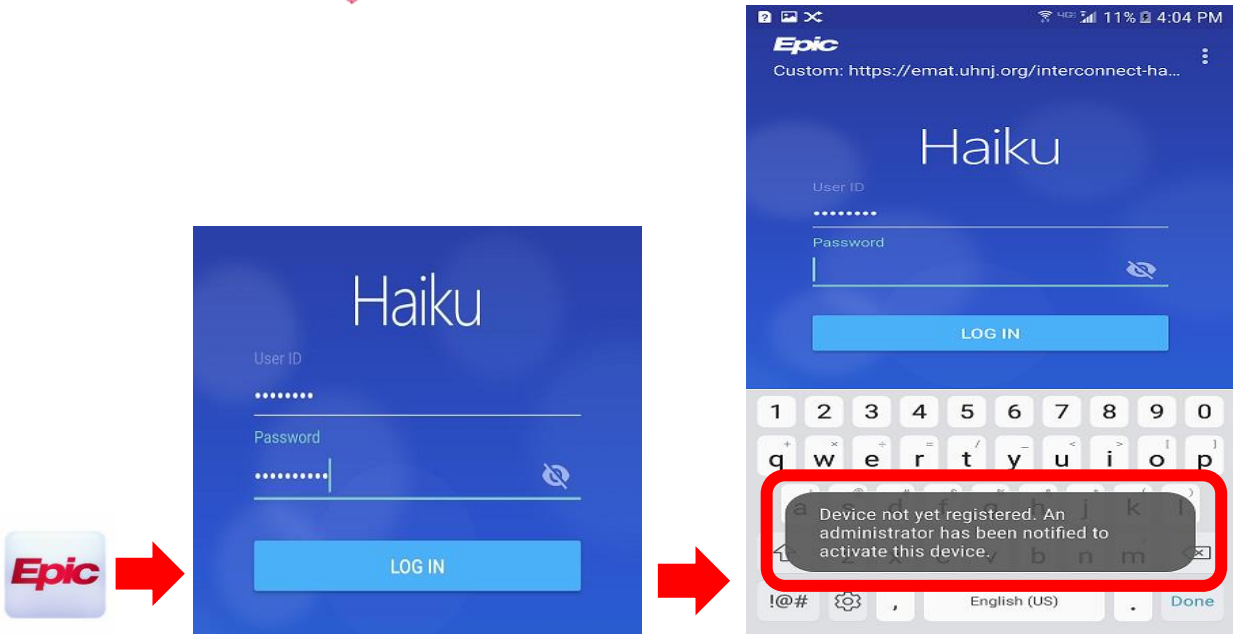
Click Link below

[Import Haiku Configuration](#)

5. Once downloaded, open the Haiku app and make sure 'PRD' is visible.



6. In order for your mobile device to function, we must register it in our system. [Open the Haiku application and attempt to login using your current credentials.](#) This will send us a registration request in the background. You must complete steps 5 - 7 correctly so we can receive the registration request.



7. We will notify you via email once we have registered your device. You will then be able to log in by launching the application as shown in step 8.

**Note:** If you remove and re-install the Haiku application, you will be issued a new device id. You will need to re-register your device by following steps 4-9 again.

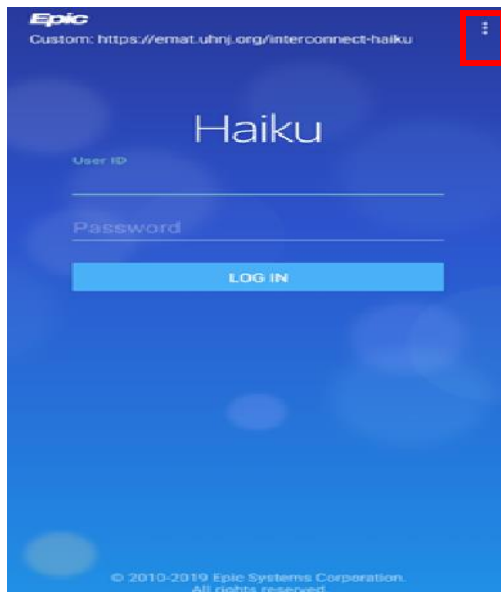
If you replace or upgrade your Phone to a new device, you will need to register the new device by following steps 1-9 again.



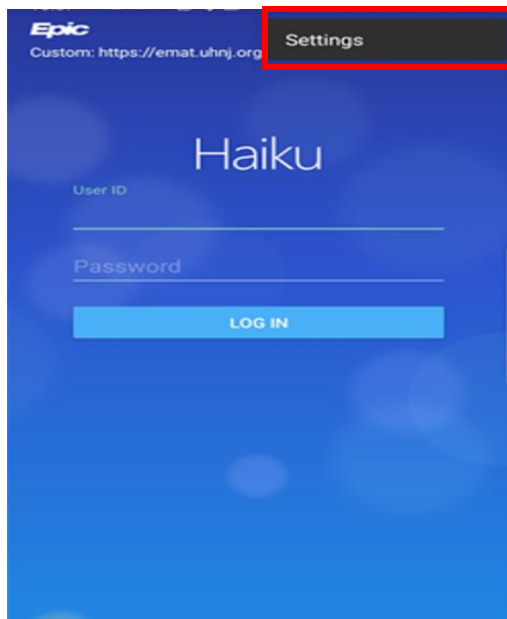
## IMPORTANT

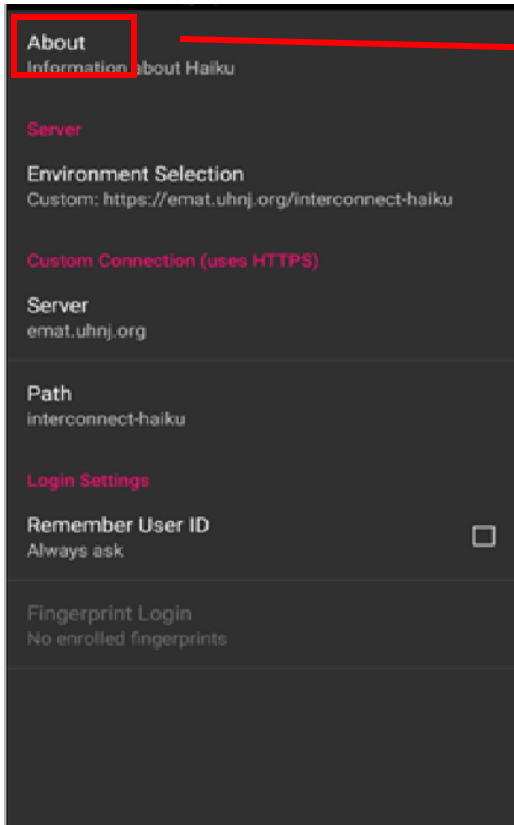
You will need to provide your Install ID (last 4 digits) in the EMR Mobile Application Registration and User Responsibility Acknowledgement form.

Please follow the steps below to retrieve your Install ID.

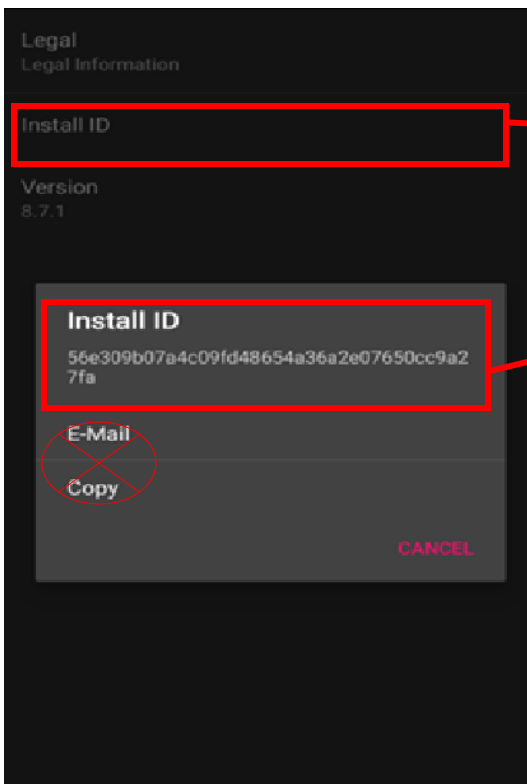


Once the application is open tap the 3 vertical dots in the upper right corner to access the settings menu





Select 'About'



This is only to VIEW and there is no need to copy or email your Install ID.

Enter the last 4 digits in the EMR Mobile Application Registration and User